



Charity Number 1062573

# Our Mission

Our mission is to provide support directly to the neediest individuals in the North & West of Romania. This is achieved through working with local Christian charities and churches, both here in the UK and in Romania.



## Our Team

Our Trustees and oversight team are in the UK, but we operate through our sister charity Pro Community Romania in Romania.

Today Daniel (Pastor) & Sarah head up Pro Community Romania (supported in Romania by Danny's father and mother). They manage a multiplicity of ministries and community projects from supplying food packs to the needy to equipping the schools with educational supplies and materials.



While the focus of most of the work is in the village of Carand, (in the west) the team are involved in outreach to the wider

community and evangelism, conferences, camps and teaching across Romania and more recently Moldova and Ukraine.

Working in partnership with the local church in Carand and Pro Community Romania (the Romanian arm of CAR), many hundreds of people have been helped, and are helped, every year.

## WE FOCUS OUR EFFORTS INTO THREE KEY THEMES

### Spiritual -

Everything we do has the end vision of serving the Kingdom of God and His purpose for His most valued creation, me and you and everyone around you to the ends of the world. Someone said that Romania spiritually is like a sleeping giant but when it wakes up it will shake the earth. We want to see Romania



alive and awake spiritually serving and praising the Creator. Our main ministry is in Carand in the Arad region and the churches around it, although we are engaged in outreach to Ukraine and teaching/evangelism in Moldova. Even after over 30 years you still see a lot of traces and strongholds from the communist system, but by the grace of God the church in Carand and more and more churches from Romania are being transformed and awakened spiritually.

## Spiritually we support churches and people through:

- **Leadership** we train and disciple local churches and individuals to establish a good and strong leadership. In addition, we will shortly be supporting theological training in Moldova.
- **Teaching** through church services, Bible studies and one to one, we help people discover and deepen more in the word of God
- **Children and youth ministry** lost and overlooked over the years in so many churches, we encourage, support children/youth ministry to teach and help them discover

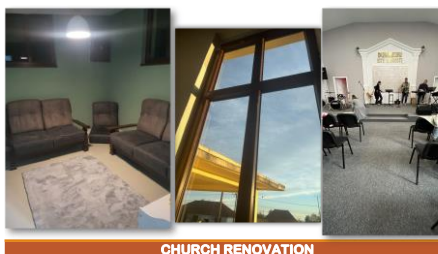


the Word of God and relationship with Jesus. In recent years we have been supporting young people from Carand, as well as Moldova and an

Orphanage, to enjoy summer camps and Christian conferences

- **Women's ministry** especially in rural areas was almost frowned upon but now there is a women ministry where women of any age can pray, study and have fellowship together

- **Evangelism** we are supporting events and outreaches around Carand and villages in the area in sharing the Gospel of Jesus Christ. In 2020 we established our online broadcasting through Facebook. Services are now streamed live each Sunday.
- **Church renovation** in Carand is helping us attract a wider audience and ensure the ministry we have is effective. Recently new double-glazed windows with blinds have



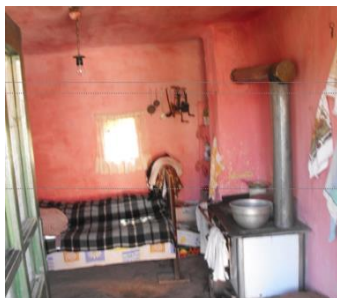
been fitted keeping the church cooler in the summer and the warmer in the winter. New sound and media equipment is supporting both

the teaching, worship and broadcasting of services. At a recent thanksgiving service for the life of a church member around 60,000 accessed the streaming service or online recording. A new coffee station is being installed near the entrance to encourage new early arrivals to the service and for use at other meetings as well.

## Social

Even though Romania joined the European Union (EU) on 1st January 2007, the elderly and poor in Romania live day to day,

week to week, on almost nothing although the cost of living is virtually the same as in the UK. The average pension is £100 – £150 per month but you find a lot of people living on as little as £50 - £100 a month. Many elderly rely on the extended family to provide help. Therefore, if you have no family to help, then what do you do?



Many live in just one or two rooms, often with a chair that doubles as a bed and a small wood burning stove that also provides some warmth. Water is mostly by a standpipe or well outside and in many cases, toilets are an outside latrine.

Even though Romania had and still has some of the greatest universities in Europe, when you live on an income of £150 - £200 a month you often can't afford college or universities for your children and there's no provision of student loans or anything like that.

Starting even in the lower schools, parents need to buy all the educational material including the manuals their children study on.

## **Socially we support churches and people through**

- **Adopt A Friend**



In 2001 we set up a project called 'Adopt A Friend'. This links (supporters) directly to a needy person/family in Romania. The sponsorship provided through donors in the UK, is forwarded to our team in Romania and every penny is transferred into food

and other essentials which are distributed monthly. We encourage letters and try to provide regular news on how those being supported are doing. Today over 50 food packs are distributed to the neediest each month.



As you may well have read on the website 'Adopt a Friend' page, a Christmas meal was organised for (and was enjoyed by) the families under the 'Adopt a Friend' programme.



- **Improving Education -**

Historically, in the rural areas, the schools have been forgotten by the government. So we have been helping by providing 21st century education tools like laptops and video projectors for classes, lockers and basic craft materials for lower schools, whiteboards for classrooms as most of the blackboards have not changed in 40-50 years, toilets so children and staff don't have to go outside to a latrine in +40 degrees in summer and -15 degrees in winter.



In addition, each year we support local schools and parents with basic educational material and supplies.

Encouraging further education, over the years we have encouraged and supported several young people to finish universities and colleges. Young people from very poor families which had no future now have better paid jobs, a future and can help their families as well.

- **Building playgrounds** for the children -

Many children are required by the families to work either the land or look after the animals from a very young age and most of them have little sense of a childhood as we know it, or never stepped on a playground. We have helped to build a few playgrounds so the children can have a few hours of a normal childhood being able to play.

- **Christmas for Children** - Christmas is a special time for all and not least the children. Either through visiting schools or by invitation to the party in the church, children do not lose out as Christmas presents are distributed to them. We also give presents to the children who come from poor families in the more remote areas around Carand.



## PRACTICAL



Carand is 10km from the nearest town and 85km from the County Town Arad. Many people if they need to get to the hospital have no means to travel and public transport is not reliable and is expensive. If a disabled person needs to travel every month to Arad to file papers in order to receive what benefits there are entitled to (that most of the time doesn't come due to bureaucracy and corruption) will struggle. This is where Danny and Sarah with the local team step in.

### **Practically, we support churches and people through**

- **An emergency fund**, we make sure there is money set apart for our team to be able to drive people to hospital, or to pay for medicine for people who can't afford to buy it and it could be a matter of life and death.
- **Local doctors**, we work together with some of the local doctors and pharmacists in helping with medicine, equipment such as ECG machine, Physio Therapy machine and basic equipment.

- **Quick response Vehicle** not long ago we had a 4x4 donated by an English couple as a quick response vehicle that works with local firefighter volunteers, but it is also used to transport food and supplies to some of the remote villages when the weather is bad, and it can be used to drive people to hospital in emergencies.



- **Fire truck** we were donated a fire truck by a church, and it is used by the local firefighter volunteers in the community around Carand. You have to realize that in the summer they have +40 degrees and, in the winter, it can go as low as – 20, most people use wood burners stoves to cook on and in the winter most have a wood burner stove in the house.



- **Fire prevention** due to the high-risk way people live we managed to install in Carand 300 smoke alarms and 300 CO alarms one for every house.

- **Holiday clubs** over the years we manage to bring different teams of young people from England to run holiday clubs with the local children of Carand and surrounding villages.



- **A Tractor** was purchased to enable wood to be collected on behalf of poorer families. This has enabled the charity to provide for some of the neediest in the village.



# Want to know more or get involved?

Visit us on line at [www.comactrom.com](http://www.comactrom.com)

Let us add you to our 'friends' list by writing to  
[comactrom@gmail.com](mailto:comactrom@gmail.com)

Follow us on Facebook  
<https://www.facebook.com/groups/200681983374737/?ref=bookmarks>